

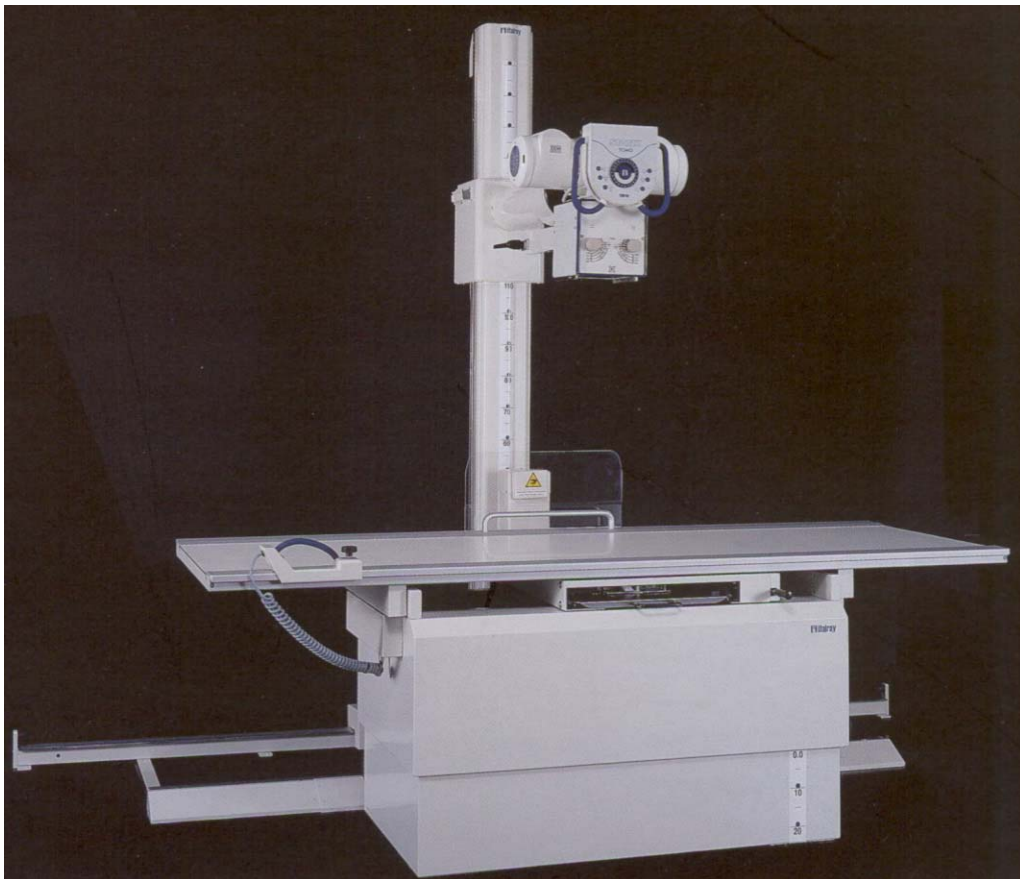
**MOA**

*Management Development Apparatus*

di Riccardo Blasi

# **Horizontal Bucky Table**

**fix/variable height**  
**(BT – BTE)**



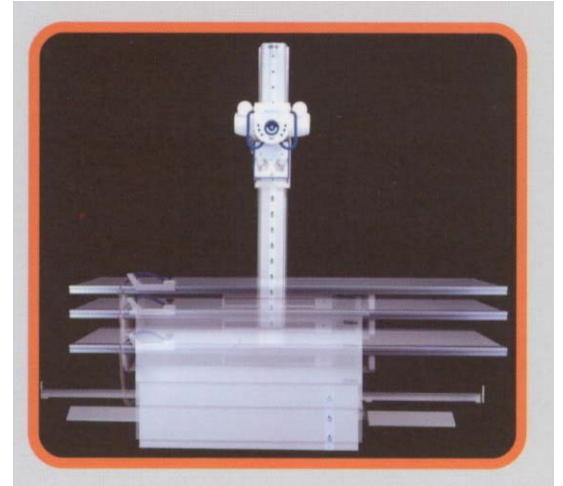
## BTE

Horizontal bucky table with four way floating table-top and motorized height adjustment. Positioning and access for traumatized, aged and disabled patient in much easier.

The smooth table-top surface ensures ease of movement for stretched patients.

BTE is supplied with high quality bucky and cassette tray mounted on special plastic rails for better and smooth sliding. Standard version includes a grid ratio 12:1 and 103 L/inch.

Brakes and vertical movements are controlled by a handle attached to the table-top. There are slides for accessories insertion.



## BT

Horizontal bucky table with four way floating table-top at fixed height.

Foot-switch brake control. Other features as for BTE.

## TOMO BT – TOMO BTE

The column tube stand has been developed with an advanced electronic microprocessor controlled tomographic unit.

TOMO BT and TOMO BTE are linear horizontal tomograph units. Principal technical features are millimetric layer height setting from 0 to 250; three tomo angles 8°, 30°, 45° and three timing for each angle with ranges from 0,2 to 3 seconds; automatic layer height increment device after each exposure.

As an option, a software package is available to give eight angle 8°, 15°, 20°, 30°, 35°, 40°, and 45° with five timings for each angle.



## ACCESSORIES

A wide range of accessories are available to meet any further requirements:

- Carbon fibre table-top
- Compression band
- Head-rest
- Lateral cassette-tray
- Handle-grips
- Additional foot-switch brake control

## CTS

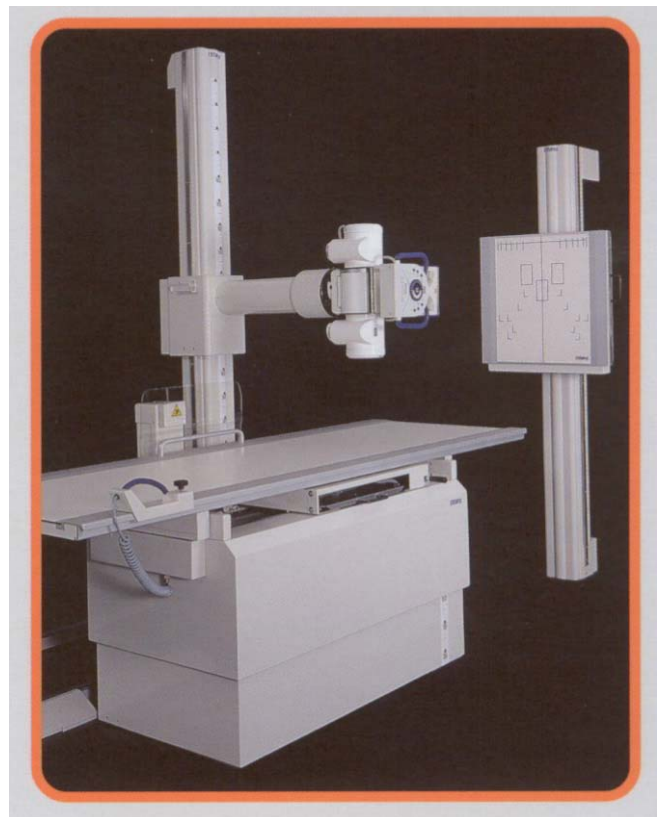
Column tube stand sliding on floor rails without wall or ceiling fixings.

The CTS, thanks to its movement possibilities, allows the optimal positioning of the x-ray tube during radiographic examinations.

The x-ray tube can be rotated on its axis to allow particular oblique examinations and to operate with chest stands. It has a minimum floor to focus distance of 55 cm.

270 degrees stand rotation for lateral examinations or special projections with stretchers.

CTS is supplied with a multiple leaf collimator with halogen lamp and bucky light for cassette centering. And optional collimator with laser centering for bucky is available.



## CBS

Column bucky stand with bucky 43x43 cm, fine ratio vibrating grid especially designed for examinations in vertical position e.g. chest.

Ionization chambers of any kind can be linked to the potter bucky.

CBS can be installed both next to the wall, by adequate fixings, and with a pedestal without reducing its utilization in case of more space needed for disabled patients.

Full vertical bucky movement for any anatomic area examination.

CBS can be supplied with external x-ray cassette holder for examinations without grid.

